



SERVICE MANUAL V1.0
BLUEROCK STRiPiNATOR MODEL 60
Removing/Replacing Blade

CAUTION!! IMPORTANT!! DANGER!! WARNING!!
DISCONNECT MACHINE FROM POWER BEFORE PROCEEDING!!

Estimated Completion Time: 45 Minutes

Tools Required:

3mm Hex Wrench
5mm Hex Wrench
6mm Hex Wrench
Adjustable Wrench

© THE NEWMAN TRADING COMPANY LLC DBA BLUEROCK® TOOLS 2018

1100 SW 16 St • Suite D Renton, WA 98057

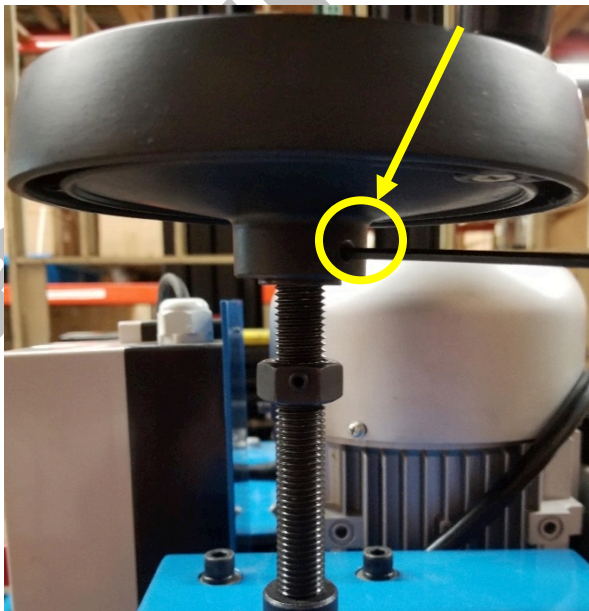
Phone 206.604.8363 • Fax 425.572.5167

www.bluerocktools.com

1. Raise the blade as high as possible by turning the handwheel counterclockwise until it stops.



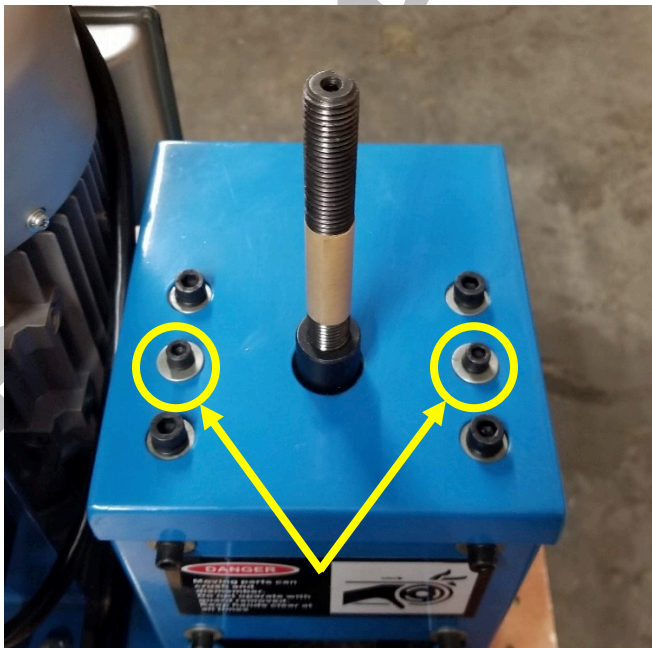
2. Use a 3mm hex wrench to loosen the set screw on the handwheel until it is free from the lead screw.



3. Remove the handwheel by spinning it counterclockwise.
4. Use a piece of tape to mark the location of the stop nut for use during reassembly.
5. Use a 3mm hex wrench to remove the set screw from the nut and then remove the nut from the lead screw using an adjustable wrench.



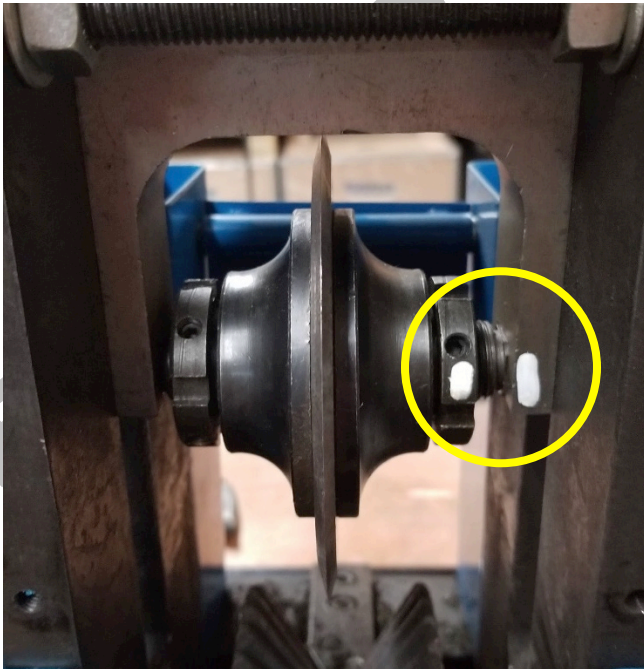
6. Use a 5mm hex wrench to remove 2 bolts from the top cover and lift the cover from the machine.



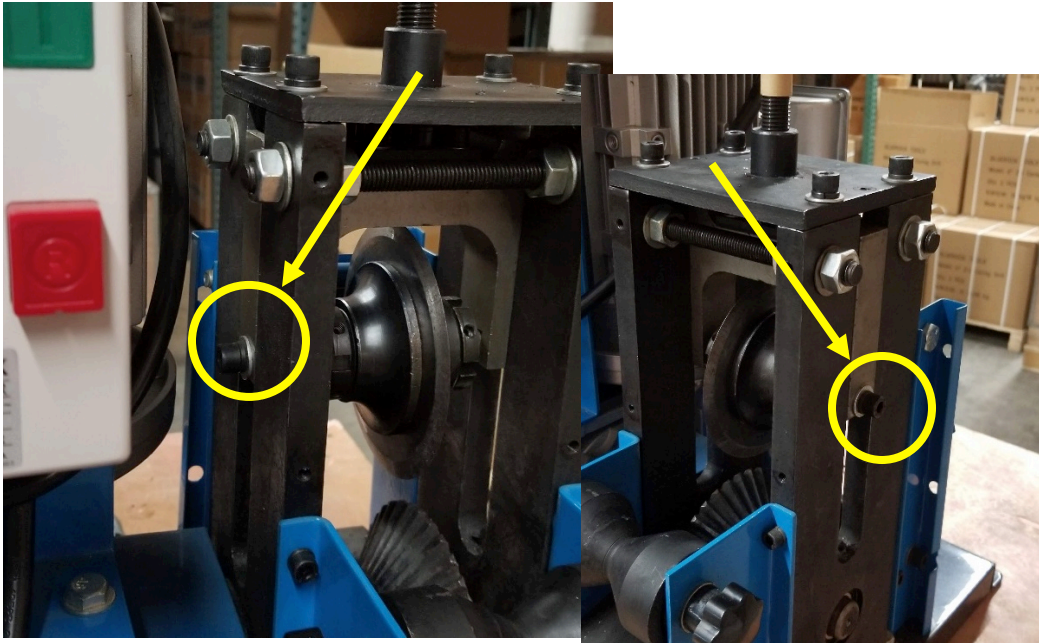
7. Use a 5mm hex wrench to remove 4 bolts from the front of the main cover and lift the cover straight up from the machine.



8. Use a paint marker to mark the orientation of the blade shaft for use during reassembly.



9. Use a 6mm hex wrench to remove the bolts on either side of the blade carriage. **Note:** Carefully hold the blade assembly so it does not fall.



10. **CAUTION: WEAR GLOVES WHEN DEALING WITH SHARP BLADES!** Carefully remove the blade assembly through the opening in the front of the machine. Be extremely careful as the blade may be sharp.



- 11.** Use a 3mm hex wrench to loosen 4 set screws on one of the spanner nuts and carefully remove the spanner nut from the shaft. **Note:** To maintain blade alignment, only loosen one of the spanner nuts.

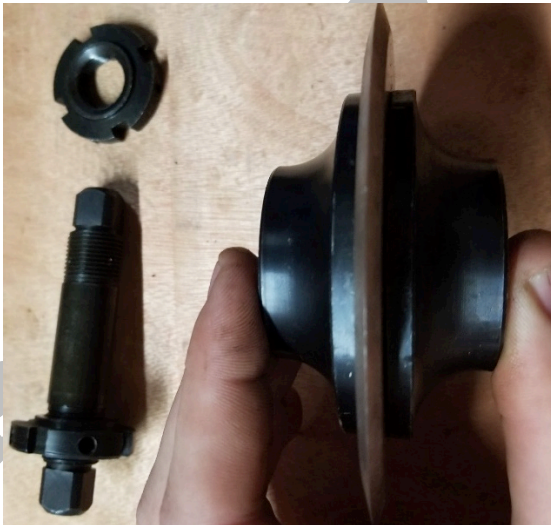


- 12.** Remove the blade carriage from the shaft. Carefully separate the blade carriage and use a 5mm hex wrench to remove 3 bolts holding the blade. **Note:** Do not lose the spacer inside the blade carriage.

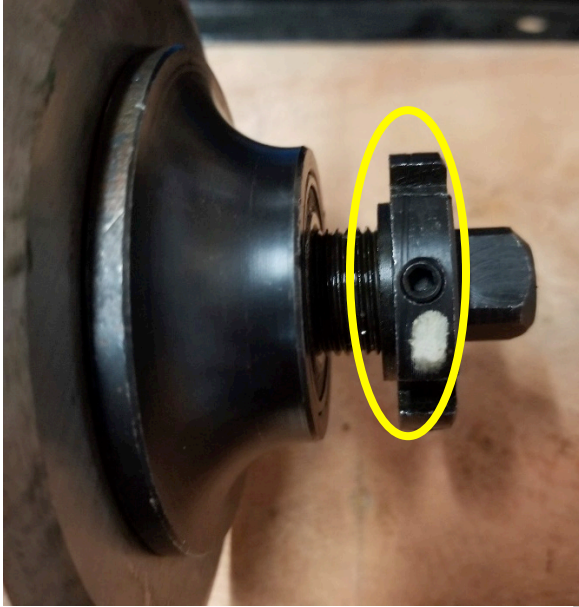


Reassembly

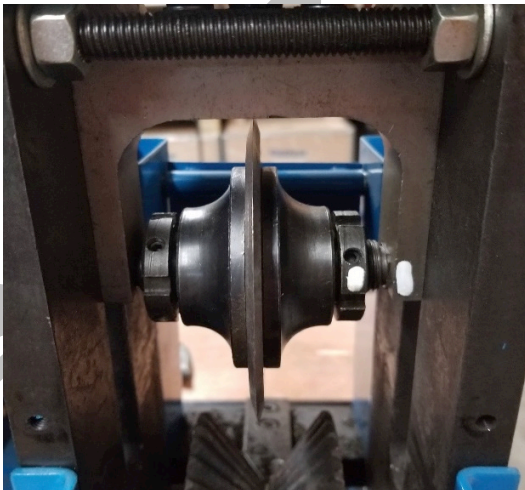
13. Carefully place the new blade on the blade carriage and align the bolt holes.
14. Carefully install 3 bolts in the blade and use a 5mm hex wrench to tighten.
15. Carefully sandwich the two halves of the blade carriage together and slide the assembly onto the shaft.



16. Screw the spanner nut onto the shaft until it is flush with the blade carriage. Be sure the flange side of the nut is facing in as shown. **Note:** Do not overtighten the spanner nut or the blade bearings will bind.



17. Use a 3mm hex wrench to tighten all 4 set screws on the spanner nut.
18. Carefully replace the blade assembly through the front of the machine. **Note:** Be sure that the blade assembly is oriented correctly using the marks made in step 8.
19. Carefully hold the blade assembly inside the carriage and screw the bolts into both sides of the shaft.



20. Use a 6mm hex wrench to tighten the 2 bolts on either side of the blade carriage

- 21.** Slide the main cover over the machine and use a 5mm hex wrench to tighten 4 bolts on the front of the machine as shown.



- 22.** Place the top cover over the machine and use a 5mm hex wrench to tighten 2 bolts as shown.



- 23.** Thread the stop nut down onto the lead screw until it is flush with the tape marker used in step 4. Use a 3mm hex wrench to tighten the set screw.
- 24.** Screw the handwheel onto the lead screw until the top of the lead screw is flush with the top of the handwheel.



25. Use a 3mm hex wrench to tighten the set screw on the handwheel. **Note:** be sure the set screw is aligned with the slot at the top of the lead screw.