

# **BLUEROCK<sup>®</sup>**

## **Tools**

### **SERVICE MANUAL V1.0**

### **MWS-808PMO Wire Stripper**

### **Removing/Replacing Electric Motor**

**CAUTION!! IMPORTANT!! DANGER!! WARNING!!**  
**DISCONNECT MACHINE FROM POWER BEFORE PROCEEDING!!**  
**PROCEDURE SHOULD BE PERFORMED BY A QUALIFIED**  
**ELECTRICIAN**

**Estimated Completion Time: 30 Minutes**

#### **Tools Required**

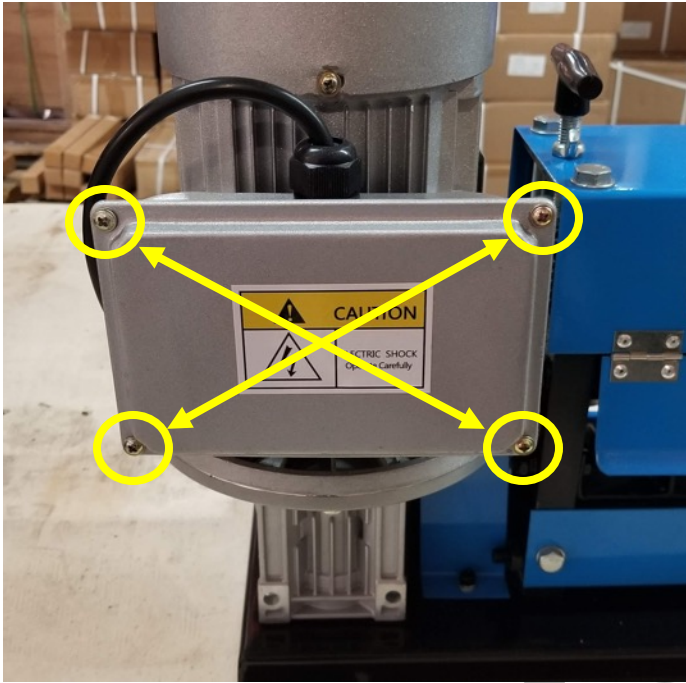
8mm Hex Wrench  
14mm Wrench  
Adjustable Wrench  
#2 Phillips Screwdriver

© THE NEWMAN TRADING COMPANY LLC DBA BLUEROCK<sup>®</sup> TOOLS 2018

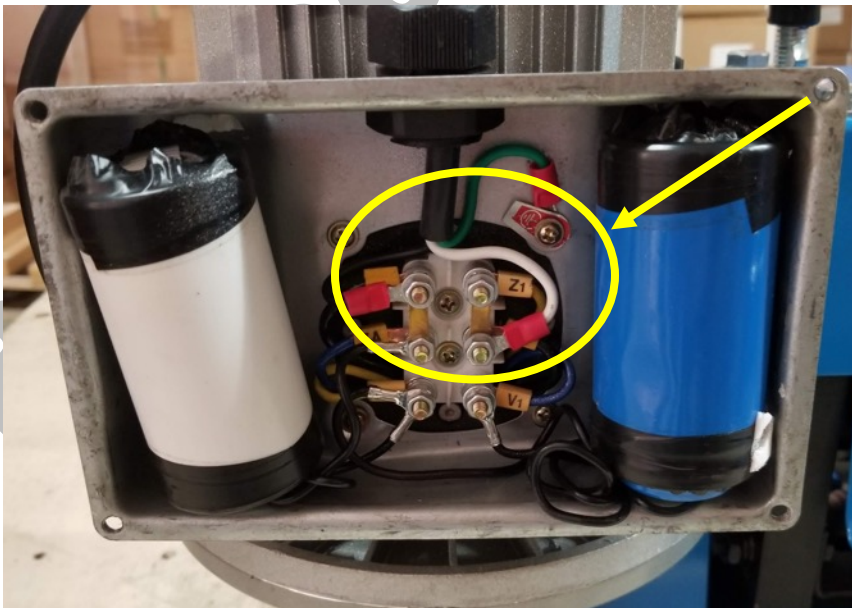
1100 SW 16 St • Suite D Renton, WA 98057  
Phone 206.604.8363 • Fax 425.572.5167

[www.bluerocktools.com](http://www.bluerocktools.com)

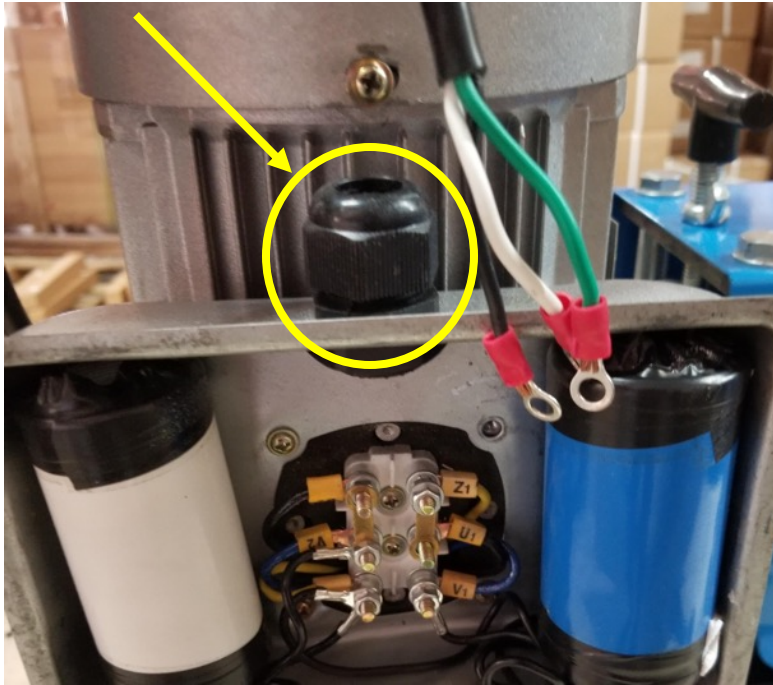
1. Locate the capacitor box on the back side of the machine and remove the 4 screws holding the cover using a Phillips #2 screwdriver.



2. Take note of the wiring arrangement inside the capacitor box and take pictures for use during reassembly. **Note:** Wire colors may differ slightly between models.
3. Unscrew the terminals that hold the power cord leads.



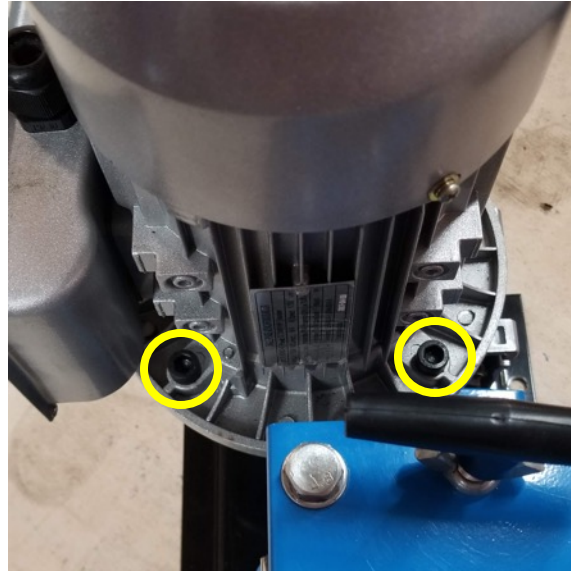
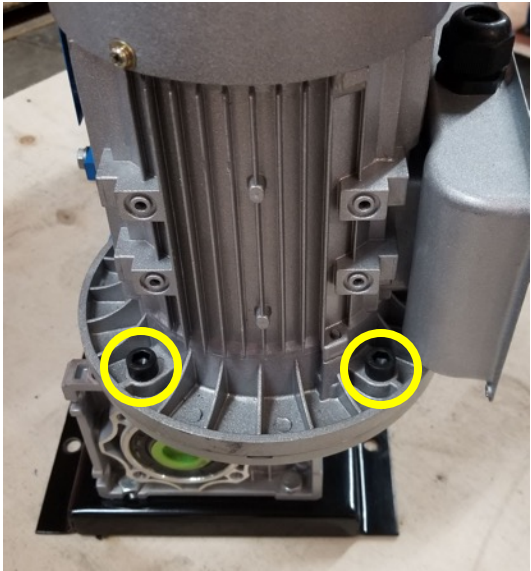
4. Use an adjustable wrench to loosen the cord grip located on the top of the capacitor box and pull the power cord out.



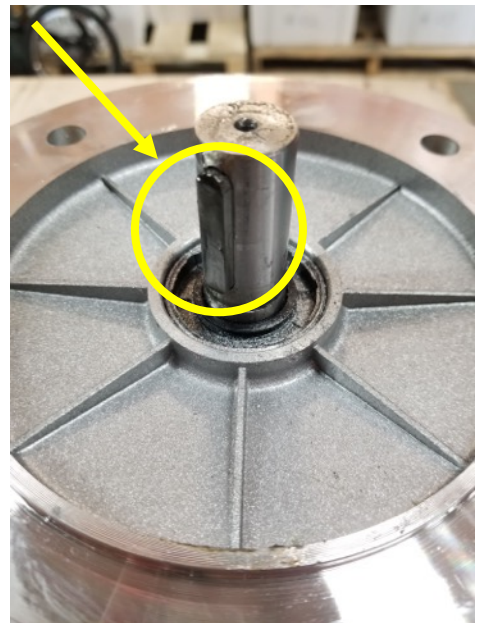
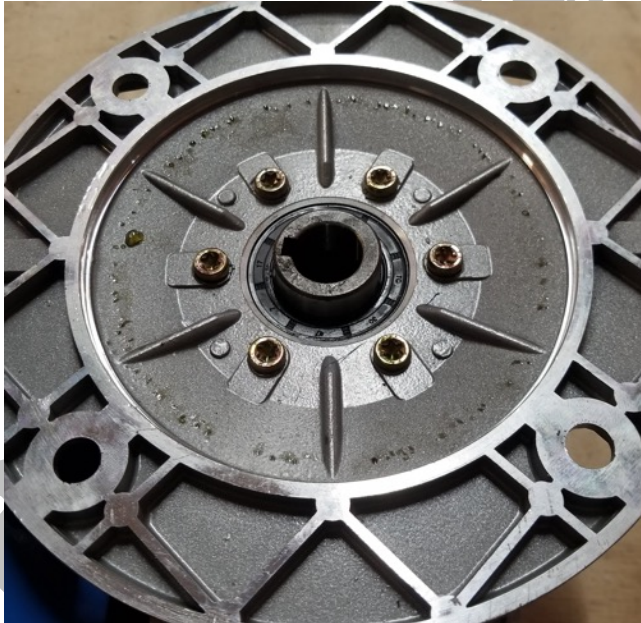
5. Use a 14mm wrench to loosen 2 bolts under the motor controller and remove it from the machine. Another 14mm wrench may be needed to hold the nut on the backside.



6. Use an 8mm hex wrench to remove 4 bolts from the base of the motor. **Note:** The nuts may fall from the lower side of the flange when removing the bolts.

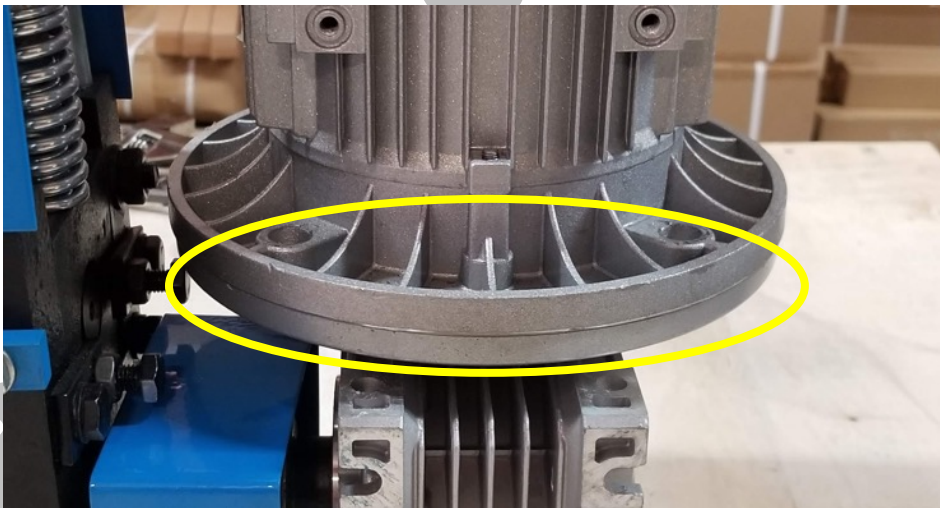
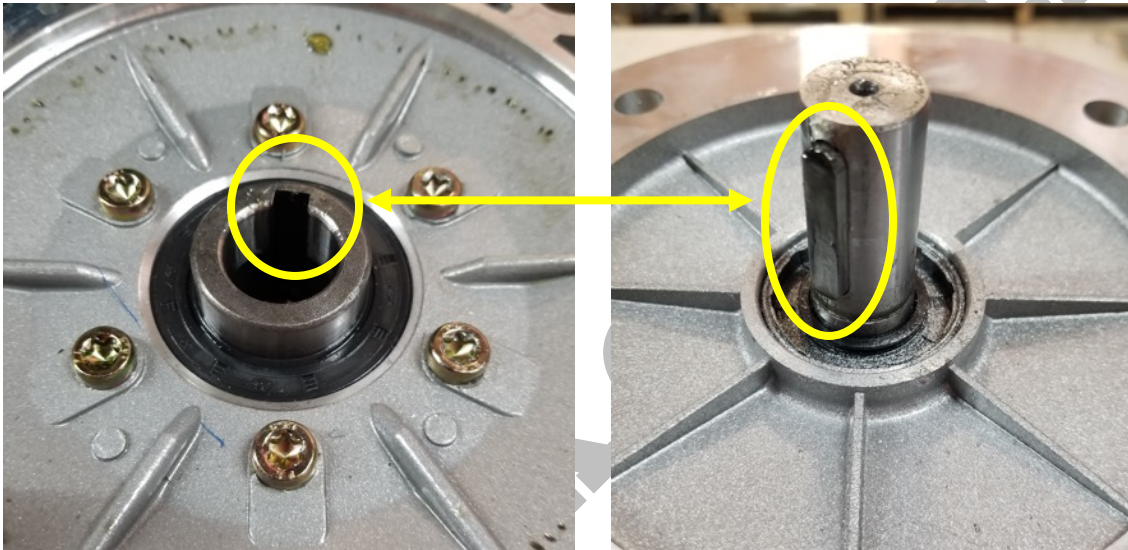


7. Lift the motor away from the machine. **Important:** Be sure to remove the key if it does not come out with the motor.



## Reassembly

8. Insert key in keyway slot of the motor shaft. **Note:** If the key does not stay in the slot, use a dab of grease to help it stick during reassembly.
9. Align the motor and transmission keyways. Slowly slide the motor down until the motor flange is flush with the transmission. **Note:** Be sure to install the motor with the capacitor box facing the rear of the machine.



10. Align bolt holes and insert 4 bolts into the motor flange. Use an 8mm hex wrench to tighten bolts.
11. Install motor starter mounting bracket and use a 14mm wrench to tighten bolts.
12. Run the power cord back through the cord grip on top of the capacitor box.

13. Reference step 3 to wire the motor. Be sure to tighten all electrical connections.
14. Tighten the cord grip using an adjustable wrench until it is tight around the cord.
15. Install capacitor cover and tighten the 4 screws with a #2 Phillips screwdriver.
16. Plug the machine in and press the start button. If the motor does not turn on **Press Stop Immediately!!** Disconnect from power and double check electrical connections.

**BLUEROCK<sup>®</sup> TOOLS**