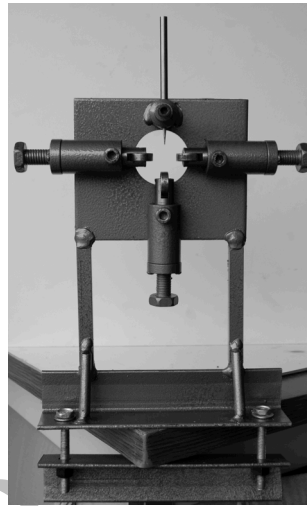


OPERATIONAL MANUAL

MODEL: WL-100 WIRE STRIPPING MACHINE



by BLUEROCK® Tools

UNPACKING THE ITEM

Caution: This machine is packed together with items that may be sharp, and oily. Remove the machine from the packaging in a safe manner. Check to ensure all accessories are included with the item while unpacking. If any parts are found to be missing, contact the retailer as soon as possible. Do not throw away the packaging until the item is out of the guarantee period. Dispose of the packaging in an environmentally responsible manner. Recycle if possible. Keep all plastic bags away from children due to risk of suffocation.

© THE NEWMAN TRADING COMPANY LLC DBA BLUEROCK® TOOLS 2016

1100 SW 16th St • Suite D

Renton, WA 98057

Phone 206.604.8363 • Fax 425.572.5167

www.bluerocktools.com

Safety

DO NOT USE THIS MACHINE UNLESS YOU HAVE READ THE OPERATING INSTRUCTIONS



Safety glasses must be worn at all times in work areas.



Long and loose hair must be contained.



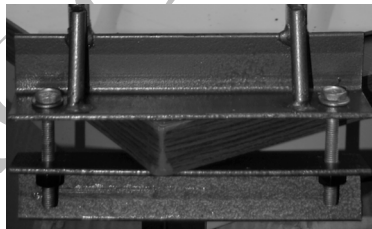
Gloves, rings and jewelry must not be worn as wire could catch on the item and bring hands towards the machine.



Close fitting/protective clothing must be worn.

PRE-OPERATIONAL SAFETY CHECKS

- Ensure the device is secured to a table or mounting surface using clamps, bench vices, bolts, etc. See one example of securing the device below.



OPERATIONAL SAFETY CHECKS

- ONLY to be operated by qualified personal who have read instructions.
- DO ensure all non-essential people are clear of the immediate work area.
- DO NOT wear loose clothing or gloves as injury can occur.
- DO NOT operate machine outside of machine specifications.
- DO NOT touch moving parts while running wire.
- DO NOT allow children or untrained personal near machine.
- DO NOT put cable/wire longer than 1 meter into machine.

Specifications

<i>MECHANICAL DATA</i>	
Cutter Wire Range	24 AWG to 7/8" OD

<i>SHIPPING DATA</i>	
Shipping Weight	7 Lbs
Shipping Carton	10" x 2" x 8"

Included Accessories

<i>DESCRIPTION</i>	<i>QTY</i>
Instruction Manual	1
Blade	2
Bolt	2
Nut	2
Washer	2
Wing-nut	1
Mounting Plate	1
Main Frame of Device	1

Note

UPON RECEIPT, CHECK CAREFULLY TO ENSURE THAT THE MACHINE IS IN GOOD CONDITION AND HAS ALL ACCESSORIES LISTED ABOVE.

General Maintenance

➤ Keep machine clean and free of debris.
➤ Check for misalignment, binding and breakage of all welds and moving parts. If damaged, repair tool before use.
➤ Keep cutting tools sharp and clean. Sharp cutters are less likely to bind and are easier to control.

Additional Available Accessories

Additional accessories for this machine can be found in BLUEROCK® Tools online shop at www.bluerocktools.com or from your local retailer.

<i>DESCRIPTION</i>
5 Pc Set Mini Cutting Blades
2 Pc Set Standard Cutting Blades

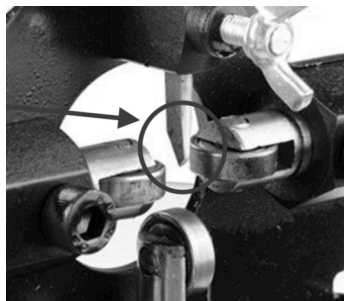
Operations

OPERATIONAL PRINCIPLES

- The purpose of the WL-100 is to remove the wire jacket from inner metal.

RUNNING WIRE THROUGH THE MACHINE

- Do all pre-operational and operational safety checks from Chapter 1.
- Consider your security and stability as well as the orientation of the machine in the work area.
- Position the blade angled towards the back of the machine like in the picture below and secure by tightening the wing-nut.



- Select appropriate size wire.
- The three adjustable rolling shafts turn and the single cutting blade makes contact with the wire. Although there are many ways to use these machines, generally the rollers are used first to press against the wire creating a cutting channel. Next the blade is adjusted to make contact with the wire. Then the final roller can be used to tighten the blade into the jacket. At this point the user can pull the wire through the cutting channel cutting the top of the wire jacket.
 - It's important to put the wire in from the back of the machine so the blade angle cuts into the wire. The wire is then pulled from back to front. If done correctly the metal wire should easily pull out of the jacket.